

# POWER CRANK

## BATTERY



www.powercrank.com.au

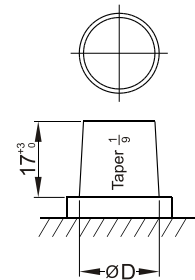
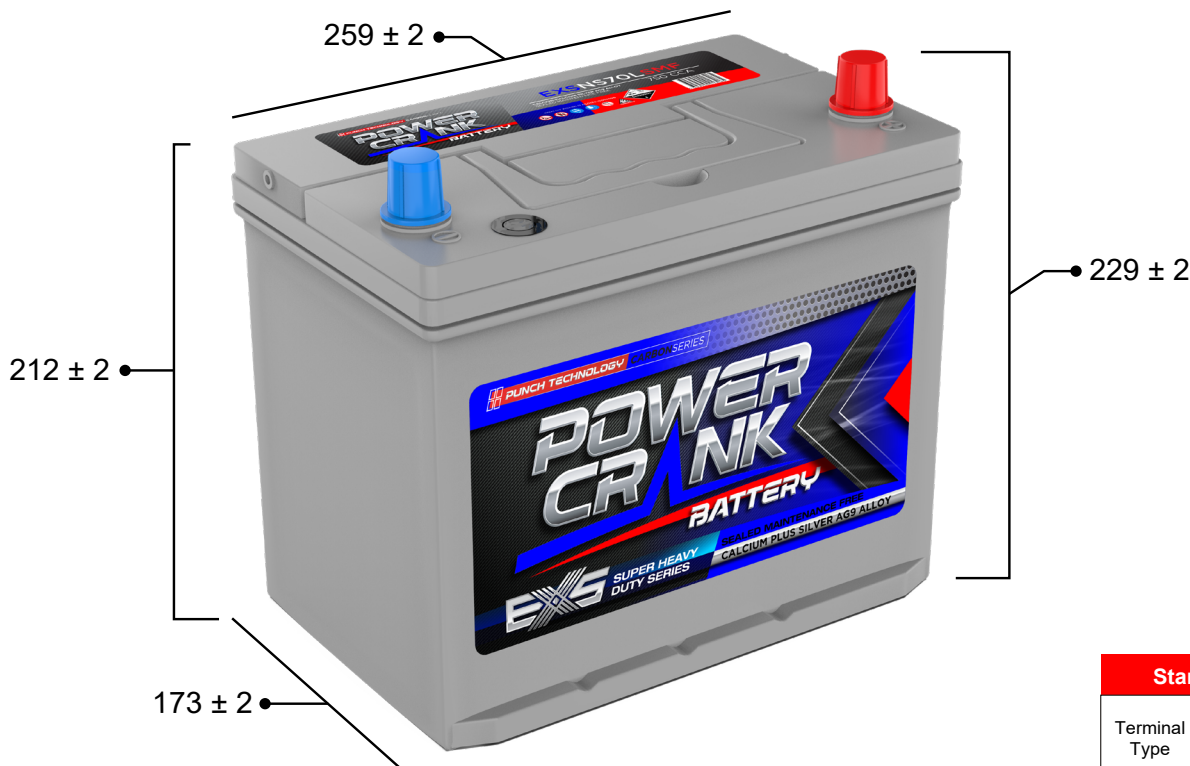


1800040009

SEALED MAINTENANCE FREE  
CALCIUM PLUS SILVER AG9 ALLOY

### Dimensions (mm)

### EXTREME



#### Standard Terminal (mm)

Terminal Type	A	
	Positive	Negative
1	19.5 <sup>0</sup> <sub>-0.3</sub>	17.9 <sup>0</sup> <sub>-0.3</sub>

# EXSNS70L SMF 750 CCA

#### Physical Specification (mm)

Nominal Voltage	12V
<b>Dimension</b>	
Length	259mm
Width	173mm
Container Height	212mm
Total Height(with Terminal)	229mm
Weight	Approx 18Kg
Acid	1.280±0.015g/cm <sup>3</sup> (25°C)
Standard Terminal	1
Cell layout	2
Hold-Down	B01

#### Electrical Specification

Cold Cranking Performance Amps@0°F(-18°C)	750CCA
---	--------

#### Cell Layout

