

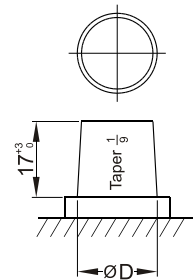
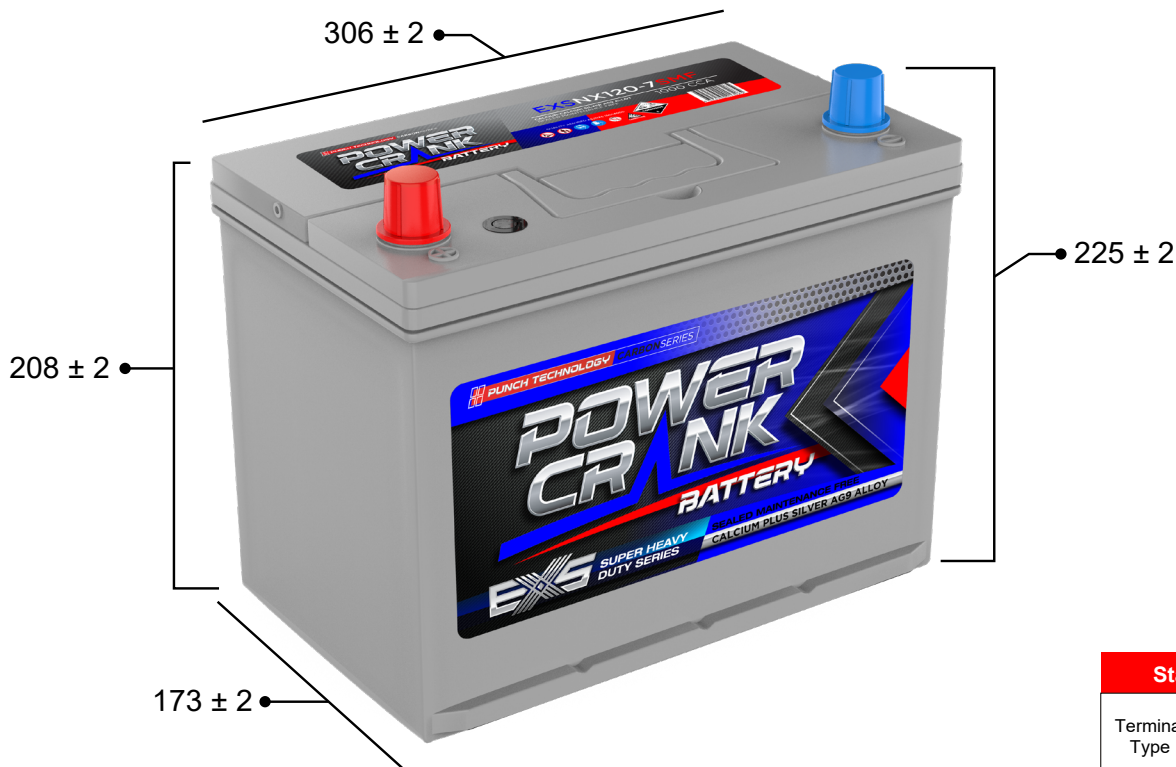
POWER CRANK BATTERY

www.powercrank.com.au ☎ 1800040009

SEALED MAINTENANCE FREE
CALCIUM PLUS SILVER AG9 ALLOY

Dimensions (mm)

EXTREME



Standard Terminal (mm)		
Terminal Type	A	
	Positive	Negative
1	19.5 ⁰ _{-0.3}	17.9 ⁰ _{-0.3}

EXSNX120-7 SMF 1000 CCA

Physical Specification (mm)

Nominal Voltage	12V
Dimension	
Length	306mm
Width	173mm
Container Height	208mm
Total Height(with Terminal)	225mm
Weight	Approx 24.3Kg
Acid	1.280±0.015g/cm ³ (25°C)
Standard Terminal	1
Cell layout	1
Hold-Down	B01

Electrical Specification

Cold Cranking Performance Amps@0°F(-18°C)	1000CCA
---	---------

Cell Layout

