

POWER CRANK BATTERY



www.powercrank.com.au

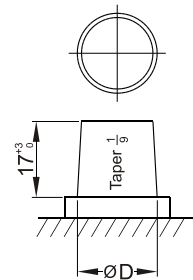
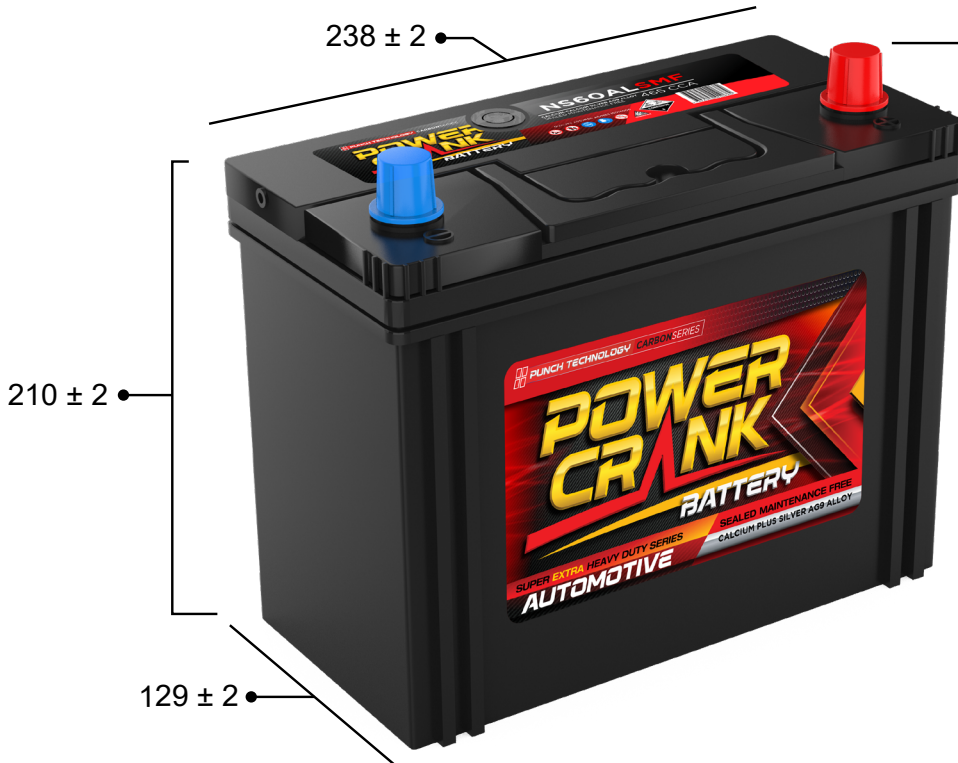


1800040009

SEALED MAINTENANCE FREE
CALCIUM PLUS SILVER AG9 ALLOY

Dimensions (mm)

AUTOMOTIVE



Standard Terminal (mm)		
Terminal Type	A	
	Positive	Negative
1	19.5 ⁰ _{-0.3}	17.9 ⁰ _{-0.3}

NS60AL SMF 465 CCA

Physical Specification (mm)

Nominal Voltage	12V
Dimension	
Length	238mm
Width	129mm
Container Height	210mm
Total Height(with Terminal)	227mm
Weight	Approx 11.9Kg
Acid	1.280±0.015g/cm ³ (25°C)
Standard Terminal	1
Cell layout	2
Hold-Down	B01

Electrical Specification

Cold Cranking Performance Amps@0°F(-18°C)	465CCA
---	--------

Cell Layout

