

# POWER CRANK BATTERY



www.powercrank.com.au

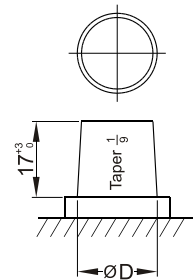
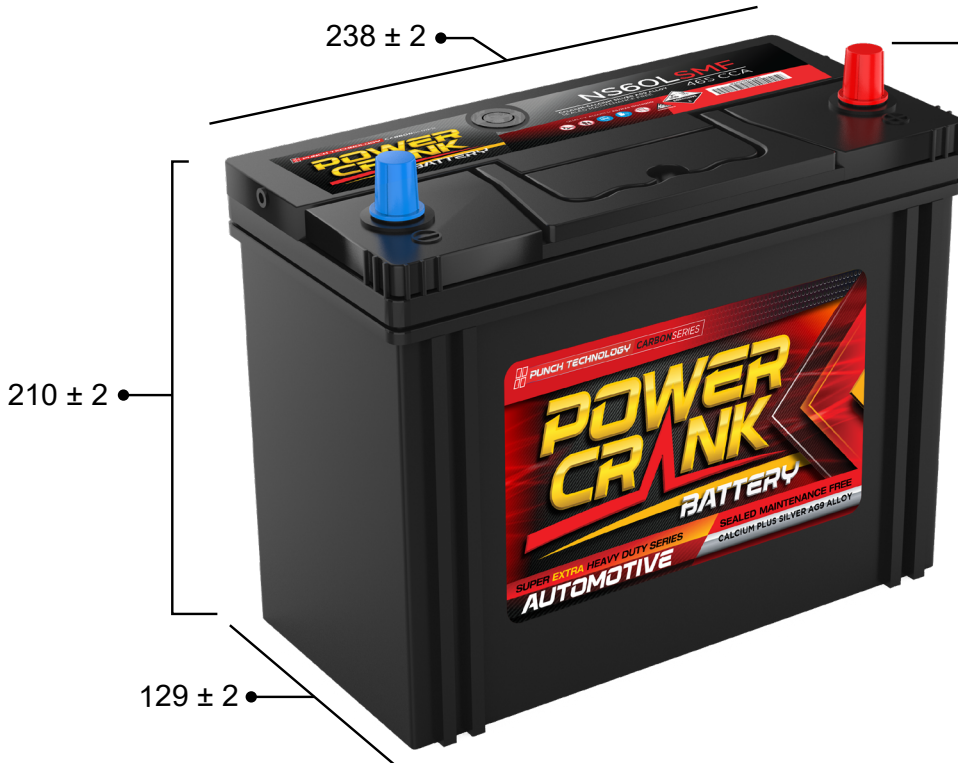


1800040009

SEALED MAINTENANCE FREE  
CALCIUM PLUS SILVER AG9 ALLOY

## Dimensions (mm)

## AUTOMOTIVE



### Standard Terminal (mm)

| Terminal Type | A                                 |                                   |
|---------------|-----------------------------------|-----------------------------------|
|               | Positive                          | Negative                          |
| 1             | 19.5 <sup>0</sup> <sub>-0.3</sub> | 17.9 <sup>0</sup> <sub>-0.3</sub> |

# NS60L SMF 465 CCA

### Physical Specification (mm)

|                             |                                     |
|-----------------------------|-------------------------------------|
| Nominal Voltage             | 12V                                 |
| <b>Dimension</b>            |                                     |
| Length                      | 238mm                               |
| Width                       | 129mm                               |
| Container Height            | 210mm                               |
| Total Height(with Terminal) | 227mm                               |
| Weight                      | Approx 11.9Kg                       |
| Acid                        | 1.280±0.015g/cm <sup>3</sup> (25°C) |
| Standard Terminal           | 1                                   |
| Cell layout                 | 2                                   |
| Hold-Down                   | B01                                 |

### Electrical Specification

|   |        |
|---|--------|
| Cold Cranking Performance Amps@0°F(-18°C) | 465CCA |
|---|--------|

### Cell Layout

